

SOFTWARE UPDATE 2.0 *July/August 2019*

When you're out detecting, determination comes with the territory. Walk a little farther, swing a little longer, and dig a little deeper because you know pay dirt is just around the corner. At Minelab, we get your passion. And like you, we never leave any stone unturned. It's that same grit and determination that drives us to make every product and every innovation just that much better.

What is new?

Difficult ferrous targets — the common enemy for all detectorists. That is until EQUINOX sw. Hit the download on our EQUINOX update to make those pesky bottle caps, rusty nails and other falsing targets a thing of the past. Fire up the Minelab Update Utility and you're on your way. It's simple. You'll experience the NEW Iron Discrimination feature, improved EQUINOX 600 backlight and much more.

Iron Discrimination F1 and F2 Adjustment

Iron Discrimination has two modes, Ferrous 1 (F1) and ferrous 2 (F2). F1 is the same as the original 'Iron Bias' setting in the earlier EQUINOX software releases, and will adjust the ferrous discrimination response for some (but not all) ferrous targets. F2 is a more advanced ferrous signal processing adjustment that incorporates the effect of F1, but will adjust the ferrous discrimination response for a wider range of ferrous targets.

- F1 = Iron Bias
 - 0-9 levels of adjustment
- F2 = Advanced Iron Discrimination
 - 0-9 levels of adjustment

EQUINOX 600 Backlight Brightness

Equinox 600 backlight is now dimmer and matches the EQUINOX 800 minimum setting, enabling a much more enjoyable experience night detecting.



Minelab Update Utility (MUU) Details:

Minimum System requirements:

USB 2.0 port
EQUINOX USB Charging Cable with Magnetic Connector

Windows 7, 8, 10

50 MB of hard drive space
20 MB of RAM

MAC OS

Greater than 10.10 Yosemite
50 MB of hard drive space
30 MB of RAM

Note:

- Only one EQUINOX can be connected to the computer during an update operation.
- The EQUINOX must be ON during the software update.
- Any custom detector settings will be preserved while performing the update.
- An internet connection is required to download the Minelab Update Utility to the computer, however, an internet connection is not required to update the EQUINOX and this can be done offline.
- The EQUINOX coil must be connected to perform the update.

Important: Do not turn off or disconnect the EQUINOX during the update process.

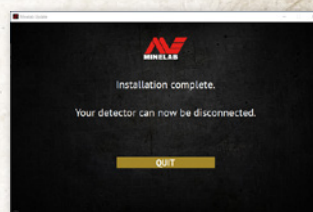
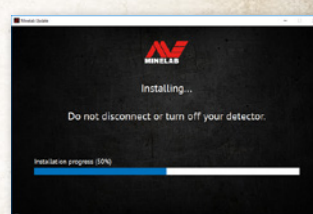
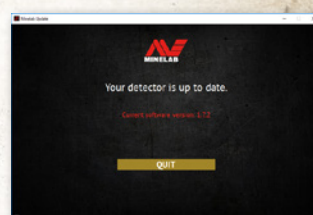
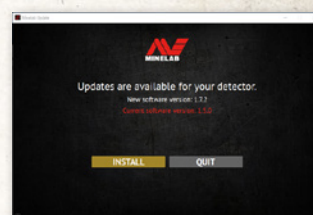
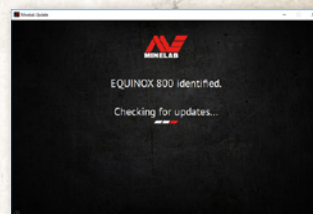
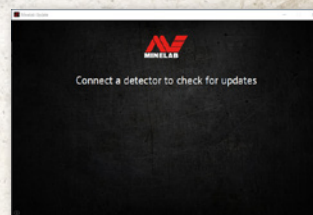
**Download the
MINELAB Update Utility here.**



PERFORMANCE // IS EVERYTHING

Once the MUU is downloaded, open the application and follow these instructions:

- 1 Connect the EQUINOX to the computer USB port using the magnetic charging cable and turn on the detector.
- 2 When the EQUINOX is identified, the MUU will communicate with the detector and determine the current software version.
- 3 If an update is available, the MUU will display *Updates are available for your detector.* Click **INSTALL** to begin the upgrade or **QUIT** to close the MUU.
- 4 If the metal detector is up to date, the application will display *Your detector is up to date* and prompt you to **QUIT** the application.
- 5 The EQUINOX screen will go blank during the update; a green LED on the top left corner of the control box will blink rapidly while the update is in progress.
- 6 Installation will take approximately 1 minute.



Note: Close the application and reopen if updating multiple EQUINOX detectors.

Screen shots are for illustration purposes only, actual screens may vary slightly from those shown. | 4907-1016-1